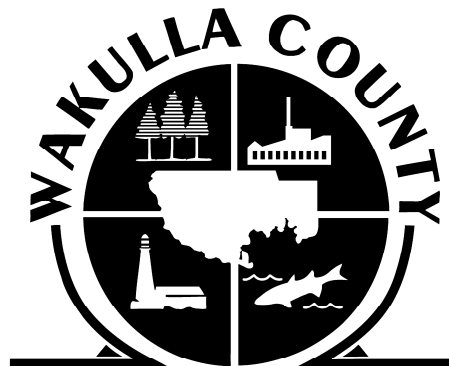




New Wakulla Resident Packet
Provided by
The Wakulla County Chamber of
Commerce



Chamber of Commerce



Important Local Government Contact Information

<p>Animal Shelter 926-0902 CHAT of Wakulla Animal Adoptions 926-0890</p> <p>Board of County Commissioners Administrative Office 926-0919 Agriculture Extension Office 926-3931 Building Department 926-7636 <i>Cooperative Extension Service</i> Agriculture/Natural Resources 926-3931 4-H Youth 926-6221 Family & Community Sciences 926-1476 Grants 926-9500 Housing Department 926-7962 Low Income Home Energy Assistance Program 926-7962 Landfill & Recycling Office 926-7010 Parks & Recreation Department 926-7227 Planning Department 926-3695 Probation Department 926-0910 Public Library 926-7415 Road & Bridges/ Public Works 926-7616 SHIP- Housing 926-7962 Solid Waste/Mosquito Control/Health Dept. 926-3591</p> <p>Clerk of Circuit Court All Departments 926-0905 Jury Information only after 5:00 pm 926-0908</p>	<p>Circuit Judge 926-0917</p> <p>County Judge 926-0943</p> <p>Drivers License 926-3575</p> <p>Emergency Management Services (EMS) 926-1565</p> <p>Florida Wildlife Commission 488-3831</p> <p>Florida Highway Patrol 245-7700</p> <p>Health Department Public Health Unit 926-3591 Environmental Health 926-2558</p> <p>Property Appraiser 926-0500</p> <p>Recreation Department-Medart Park 926-7227</p> <p>Sheriffs Department Emergency Calls 911 County Jail 926-7171 All Other Calls 926-0800</p> <p>Supervisor of Elections 926-7575</p> <p>Tax Collector 926-3371</p> <p>Tag Department 926-5201</p> <p>US Coast Guard Auxiliary Flotilla 13 926-5654</p> <p>Ambulance Service 926-1565</p> <p>Veterans Services Department 926-1072</p> <p>Wastewater Department/ Public Works 962-7616</p> <p>Weatherization 926-6292</p>
--	--



City Government Contact Information

Sopchoppy

City of Sopchoppy

City Clerk: Jackie Lawhon

jackie.lawhon@sopchoppy.org

Mailing address

PO Box 1219
Sopchoppy, FL 32358

Physical Address

100 Municipal Avenue
Sopchoppy, FL 32358

Commissioners:

Bob Greener (Mayor)
Colleen Skipper (Vice Mayor)
Eddie Evans
Jim Stokley
Richard Harden

Regular meeting: 2nd Monday-6:30 pm at City Hall

Contact phone numbers:

City Hall	962-4611
Fire Department	962-4611
Police Department	962-4611
Water Department	962-4611

St. Marks

City of St. Marks

City Manager: Zoe Mansfield

cityofsaintmarks@comcast.net

Mailing address

PO Box 296
St. Marks, FL 32355

Physical Address

788 Port Leon Dr
St. Marks, FL 32355

Commissioners:

Chuck Shields (Mayor)
Phillip Cantner
Allen Hobbs
Ron Gauliardi
Keith Ward

Regular meeting: 2nd Thursday-7:30 pm at City Hall

Contact phone numbers:

Clerks Office	925-6224
Maintenance Dept.	925-6224



Local Post Offices

United States Post Office—*Crawfordville*
606 Wakulla Arran Road
Crawfordville, FL 32327
850-926-3256

United States Post Office—*Panacea*
1444 Coastal Highway
Panacea, FL 32346
850-984-5253

United States Post Office—*Sopchoppy*
2284 Sopchoppy Highway
Sopchoppy, FL 32358
850-962-4741

United States Post Office—*St. Marks*
779 Port Leon Dr
St. Marks, FL 32355
850-925-6178



Wakulla County Schools

For more information visit <http://www.wakullaschooldistrict.org/>

Superintendent of School/Board Office

926-0065

Transportation Department (Bus Garage)

926-7550

Maintenance Department

926-5646

WEC/ Adult Education

926-1841/962-2151

WEC Pre-K Program

926-8111

Sopchoppy Educational Center

962-2151

Crawfordville Elementary School

379 Arran Road

Crawfordville, Florida, 32327

Principal: Angie Walker

Assistant Principal: Laura Kelley

926-3641

Coast Charter School

48 Shell Island Rd.

St. Marks , FL 32355

Principal: Susan Flournoy

925-6344

Medart Elementary School

2558 Coastal Highway

Crawfordville, Florida, 32327

Principal: Robert R. Pearce

Assistant Principal: Sharon Kemp

962-4881

Riversink Elementary School

530 Lonnie Raker Lane

Crawfordville, FL 32327

Principal: Jackie High

Assistant Principal: Melinda H. Young

926-2664

Riversprings Middle School

800 Spring Creek Highway

Crawfordville, Florida, 32327

Principal: Dod Walker

Assistant Principal: Michelle Baggett

926-2300

Shadeville Elementary School

45 Warrior Way

Crawfordville, Florida, 32327

Principal: Susan Brazier

Assistant Principal: DeeAnn Hughes

926-7155

Wakulla Middle School

22 Jean Drive

Crawfordville, Florida, 32327

Principal: JoAnn Daniels

Assistant Principal: Mike Barwick

926-7143

Wakulla High School

27 Coastal Highway Crawfordville, Florida,
32327

Principal: Mike Crouch

Assistant Principal: Jackie High

Assistant Principal for Discipline: Randy Barnes

926-7125

WHS Guidance

926-2221

WHS Attendance

926-7128



School District Contacts

850-926-0065

**unless otherwise noted*

Administrator	Title	Extension
<u>David Miller</u>	Superintendent	222
<u>Sue Anderson</u>	Director of Special Programs	246
<u>Tom Askins</u>	Director of Adult Ed and SEC	962-2151
<u>Randy Beach</u>	Chief Financial Officer	243
<u>Randy Bristol</u>	Executive Director of Facilities/Maintenance	254
<u>Jimmie Dugger</u>	Asst. Supt. for Administration	226
<u>Pat Jones</u>	Coordinator of Transportation	926-7550
<u>Gail Mathers</u>	Director of Food Services	248
<u>Beth Mims</u>	Executive Director of Curriculum	250
<u>Beth O'Donnell</u>	Asst. Supt. for Instruction	236
<u>Kim Dutton</u>	Director of Pre-K Program	926-8111
<u>Alan Rosier</u>	Director of MIS & Technology	232
<u>Tanya English</u>	Executive Director of ESE/Student Services	252
<u>Karen Wells</u>	Executive Director of HR/Risk Management	256
<u>Jim Griner</u>	Coordinator of Safety & Risk Management	271



Civic Clubs & Organizations of Wakulla County Contact Info

American Cancer Society

297-0588

American Red Cross

878-6080

Big Bend Crime Stoppers

891-4182

Capital Area Healthy Start

488-0288

Capital City Kiwanis

893-4863

C.H.A.T. of Wakulla

(Citizens for Humane Animal Treatment)

(850) 926-0890

Coastal Optimist Club

926-7111

Community Health Charities of Florida

(850) 597-7745

Concerned Citizens of Wakulla County

Della Hansen 926-4293

Crawfordville Lions Club

926-3473

Crawfordville Women's Club

Pam Davis 926-7111

Elder Care Services

921-5554

Friends of Wakulla Springs

Ron Piasecki

Girl Scout Council of Apalachee Bend

386-2131

Iris Garden Club

Jeannie Broadhead

Keep Wakulla County Beautiful

926-0830

Panacea Waterfronts Florida Partnership

926-0909

Tallahassee Area Convention & Visitors Bureau

413-9200

Tallahassee Board of Realtors

224-7713

United Way Big Bend

414-0844

Wakulla Book Club

926-9201

Wakulla County Christian Coalition

656-2578

Wakulla County Historical Society

926-7405

Wakulla County Rotary Club

Becky Bergeron/Amy Geiger 2010

Wakulla County Senior Citizens Council, Inc

926-7145

Wakulla County Chapter of the Florida Native Plant Society

926-3619

Wakulla County 4-H

926-3931

Wakulla County Moose Lodge

984-2510

Harvest from the Heart

926-2415

Habitat for Humanity of Wakulla

926-4544

The Wailing Women Ministries

962-5813

Wakulla County Shriners Club

EM Glover

926-3026

Other useful numbers:

Utility Assistance Program

926-8677

Panacea Welcome Center

984-3966

Crawfordville Women's Club

Pam Davis 926-7111

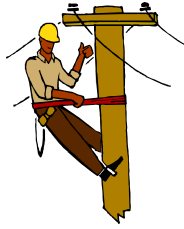
Enita 926-3159 or 294-6482

Summer Trace Apartments

984-4811

Talquin Crawfordville Office

926-7422



Utility Services

Electric

Progress Energy (Florida Power)	1-800-700-8744
Talquin Electric Cooperative	926-7422
Talquin Outages 24 hr service	1-888-802-1832

Water & Sewer

City of Sopchoppy Water Dept	962-4611
Talquin Electric Cooperative	926-7422
Panacea Area Water System Inc.	984-5301

Phone service

Embarq-to establish new service

Residential	1-800-326-2384
Business	1-800-786-6272

Garbage Services

Residential Garbage Services	926-9654
J & C Garbage Pickup	421-1290
Waste Pro	561-0800
MBE-Marcus Bouton Enterprises	508-6179
Marpan Recycling	216-1006

Wakulla County Volunteer Fire Department Non-Emergency Contact Information

Apalachee Bay

926-2441

Crawfordville

926-6220

Medart

926-8171

Ochlockonee Bay

984-5687

Panacea

984-5814

Saint Marks

925-6224

Sopchoppy

962-4611

Smith Creek

962-2378

Wakulla Station

421-5134

Chief Honeybone

926-6220



State Parks in Wakulla County

For more information visit www.floridastateparks.org

Edward Ball Wakulla Springs State Park

550 Wakulla Park Drive Wakulla Springs, FL 32327
850-224-5950

Hours of Operation

Florida state parks are open from 8 a.m. until sundown 365 days a year.

Driving Directions

Take US-319/SR-61 (Crawfordville Hwy) South for 2 miles. Bear left onto SR-61(Wakulla Springs Rd) for 6 miles. Turn left onto SR-267 at flashing stop light. Turn Right into Park entrance.

Ochlocknee River State Park

P. O. Box 5 Sopchoppy, FL 32358
850-962-2771

Hours of Operation

8:00 AM to sunset

Driving Directions

Ochlocknee River State Park is located four miles south of Sopchoppy on U.S. 319.

San Marcos de Apalache Historic State Park

148 Old Fort Road St. Marks, FL 31355
850-925-6216

Hours of Operation

The historic site is open from 9:00 a.m. to 5:00 p.m. Thursday through Monday and closed on Tuesdays, Wednesdays, Thanksgiving, Christmas and New Year's Day.

Driving Directions

San Marcos de Apalache Historic State Park is located in St. Marks, off S.R. 363 on Old Fort Road.



Campgrounds in Wakulla County

For more information visit www.campgroundsofamerica.com

Holiday Park & Campground

1089 Coastal Highway
Panacea, FL 32346
850-984-5757

Ochlockonee River State Park

PO Box 5
Sopchoppy, FL 32358
850-962-2771

Panacea RV Park

1089 Coastal Highway
Panacea, FL 32346
850-984-5883

Shell Island Fish Camp & Marina

Shell Island Road
Saint Marks, FL 32355
850-925-6226

Sopchoppy City Park

252 Park Avenue Sopchoppy, FL 32358
Call
(850) 962-4611 or (850) 962-4611
For Hours of Operation

This 34 acre park is located on the Sopchoppy River with full service camping. The park offers a boat ramp, two fishing docks, walking trail, baseball field, basketball court, horseshoe pits and shuffleboard court, gazebo, two large shelters with restrooms, showers, playground, and small picnic shelters with frills, all located within view of the beautiful Sopchoppy River.